

It's a Long Way from Jack London Square...

Presentation to Waterfront Center Conference
Panel A-1 Waterfront Pioneers: Thirty Years Ago and Today
Friday, October 28, 2011, 10:15 a.m. to 12:15 p.m.

Sandra Threlfall, Executive Director
Waterfront Action, Oakland, CA
www.waterfrontaction.org





East Bay Shoreline State Park

OAKLAND

Lake Merritt

Oakland Estuary

Middle Harbor Shoreline

ALAMEDA

Martin Luther King Jr. Shoreline

Crown Beach

San Francisco Bay

80

880

980

880

MANDELA PKWY

7TH ST

BROADWAY

7TH ST

14TH AVE

29TH AVE

FRUITVALE AVE

HIGH ST

INTERNATIONAL BLVD

SAN LEANDRO ST

66TH AVE

HEGENBERG

San Leandro Bay

ATLANTIC AVE

WEBSTER ST

CENTRAL AVE

ENCINAL AVE

LINCOLN AVE

PARK ST

TILDEN WAY

BROADWAY

OTIS DR

DOOLITTLE DR

Jack London Square

Estuary Park

Union Point Park

Jack London Square

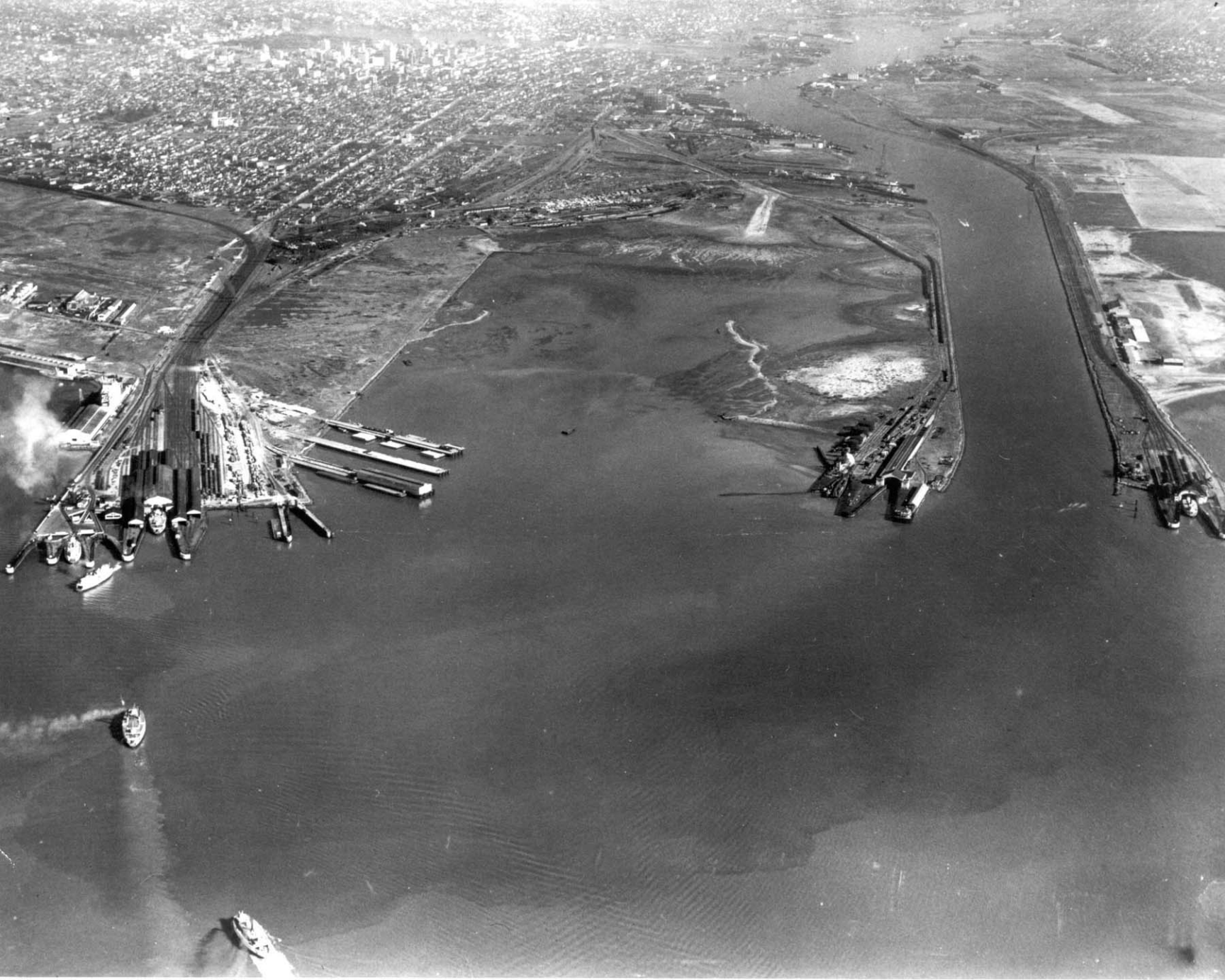






Middle Harbor Shoreline Park





Tunnel Becomes Terminal

Just imagine--building a tunnel under the Bay for a transit system! Long-time residents report that initially the idea was incredible. Would they really be able to do it?







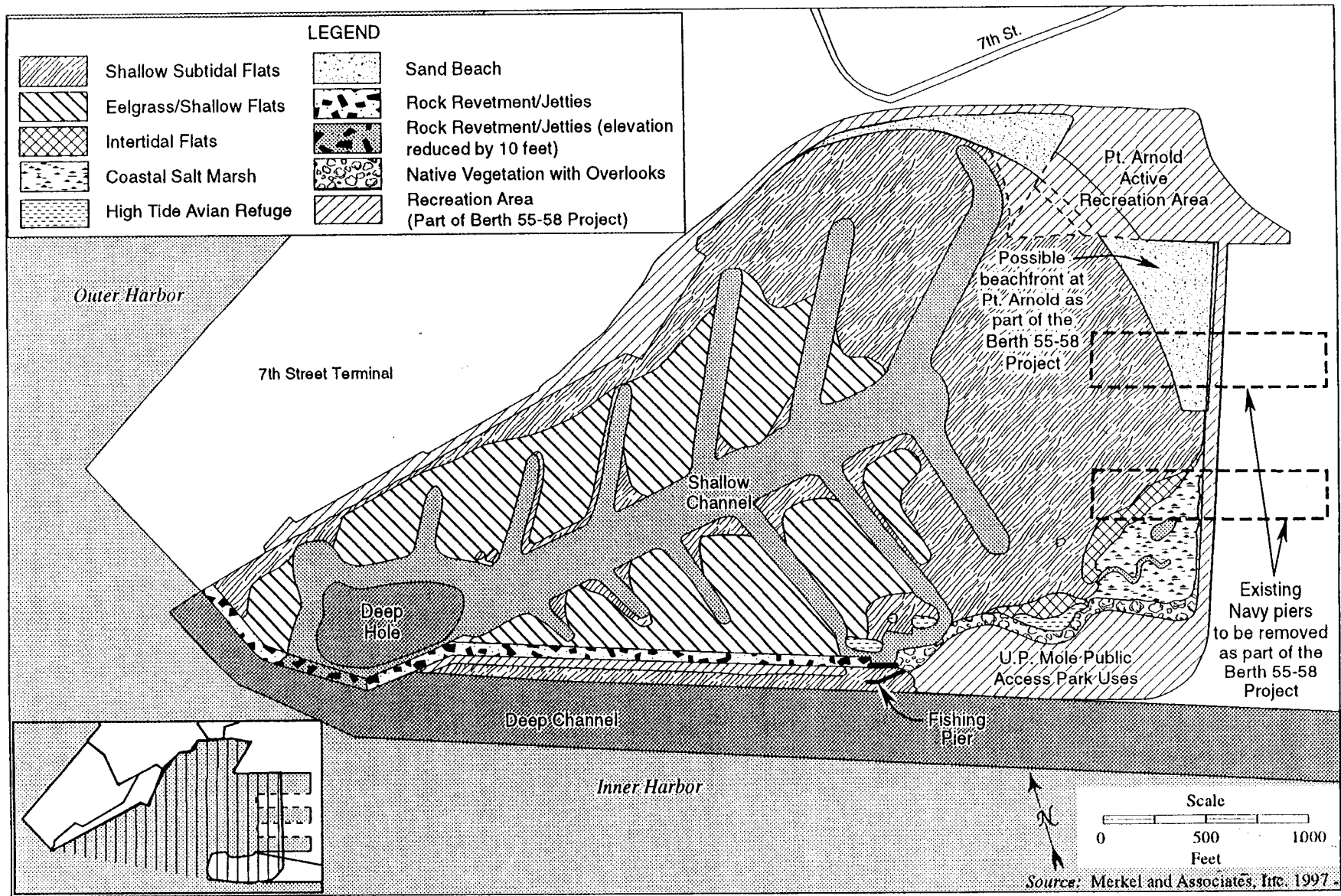


Figure 2.2-6

PRELIMINARY HABITAT DESIGN CONCEPT FOR THE MIDDLE HARBOR ENHANCEMENT AREA

Middle Harbor Shoreline Park

PORT OF OAKLAND



LEGEND

- Bike Path
- Parking
- Handicap Parking/ Access
- Drinking Water
- Information
- Restroom
- Picnic
- BBQ Pit
- Viewing Scopes
- Bench



Port of Oakland Marine Terminals

International Maritime Center / Seafarers Club

Port View Park

Trail Tower Exhibit Room With A View

Playground

Fishing Pier

Water more than four feet deep

Future Jetty

Oakland Estuary

Shallow water less than four feet deep

Future Middle Harbor Habitat Enhancement Area

No vessel access

Former Ferry Slip & Rail Head

Point Arnold

Fountain

Beach and Dunes

Training Wall Exhibit

Coves

Salt Marsh Restoration Area

Observation Tower

Habitat Overlooks

Port Operations Viewing Area

SEVENTH STREET

MIDDLE HARBOR RD

USS Oakland Mast

Amphitheater and Stage

Port of Oakland Marine Terminal



MIDDLE HARBOR
SHORELINE
P · A · R · K
PORT OF OAKLAND



Rebuilding the Web

This park and the adjacent Middle Harbor Habitat Enhancement Area have been carefully designed to provide important habitat for native species. Eelgrass will be planted and algae will grow in the sunlit shallows of the 180-acre habitat. Algae and microscopic animals feed worms, clams, shrimp, and other creatures, which in turn become food for species such as Dungeness crab, starry flounder, and bat ray.



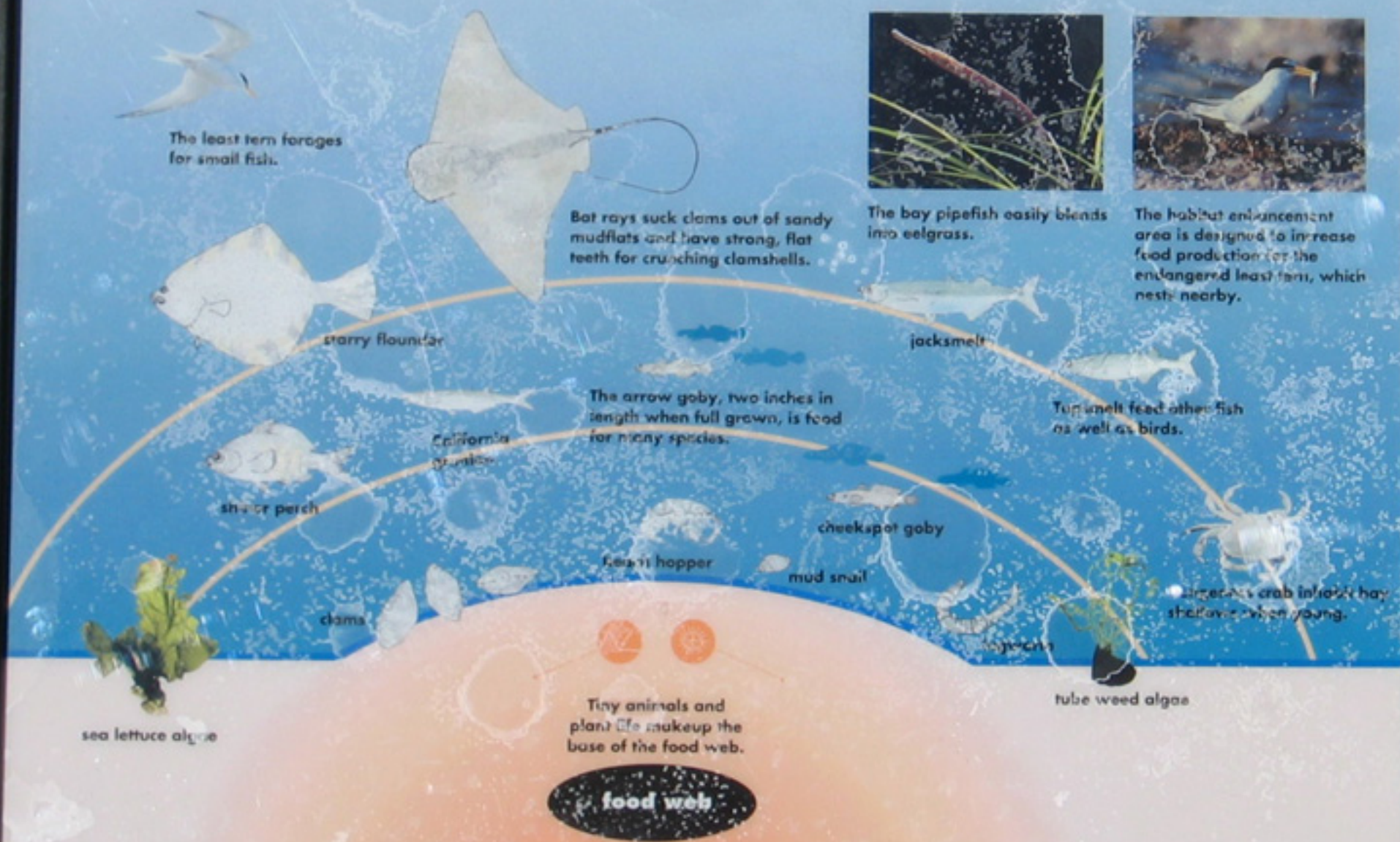
Eelgrass and shallow-water habitat



The bay pipefish easily blends into eelgrass.



The habitat enhancement area is designed to increase food production for the endangered least tern, which nests nearby.







A large, white, industrial steel structure, likely a bridge or a large crane, dominates the frame. The structure is composed of thick, cylindrical beams and horizontal girders. The words "PORT OF OAKLAND" are painted in a bold, black, serif font on a horizontal beam. The background is a clear, bright blue sky. In the foreground, a strand of barbed wire is visible at the bottom. The overall scene is brightly lit, suggesting a sunny day.

PORT OF OAKLAND




ROOM WITH A VIEW
AN INTERACTIVE MUSEUM - 1000 WEST 10TH AVENUE



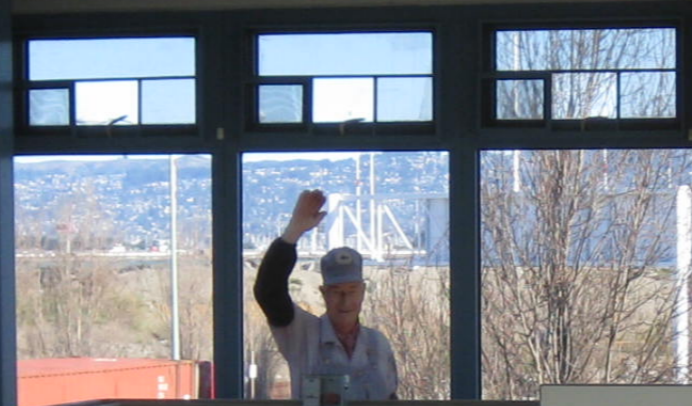
OAKLAND PIER TRAIN TOWER

ROOM WITH A VIEW

AN HISTORICAL EXHIBIT  OPEN TO THE PUBLIC

PORT OF OAKLAND
C 408





KEEP OUT
ELEVATOR
OUT OF
ORDER

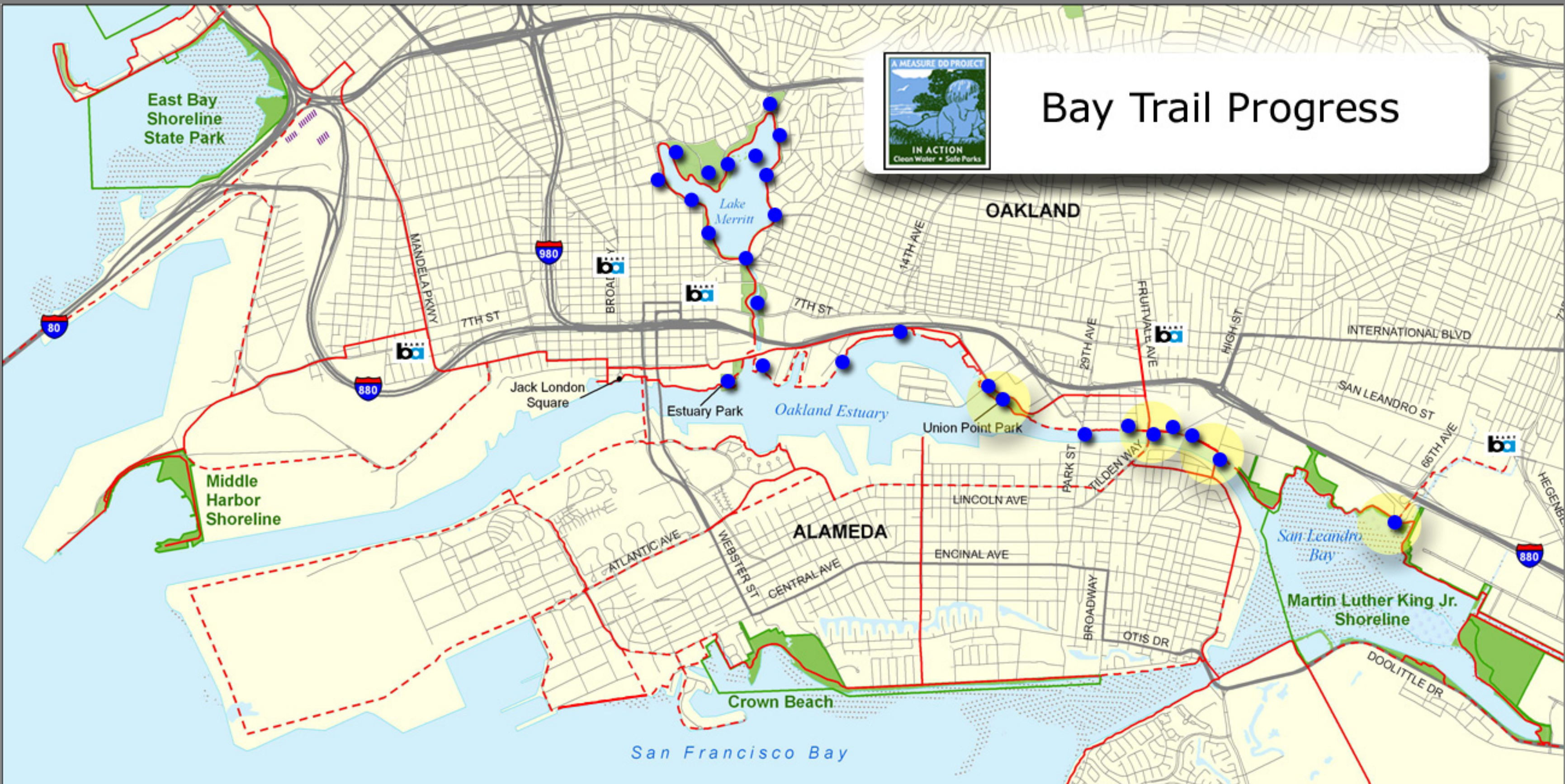
CREDITS

THE ELEVATOR WAS DESIGNED AND MANUFACTURED BY THE ELEVATOR COMPANY OF NEW YORK, NEW YORK. IT WAS INSTALLED IN THE BUILDING IN 1965. THE ELEVATOR WAS REPAIRED IN 1985 AND 1995. THE ELEVATOR WAS REPAIRED IN 2005 AND 2015. THE ELEVATOR WAS REPAIRED IN 2020 AND 2025.





Bay Trail Progress





\$198.25 million bond measure

- Lake Merritt
- Oakland Bay Trail
- Waterfront Parks
- Creek Restoration & Watershed Acquisition

Passed by > 80%

2002





A-1 Self Storage

**SUBMARINE
CABLE
CROSSING**

-8-
-10-
-12-
-14-



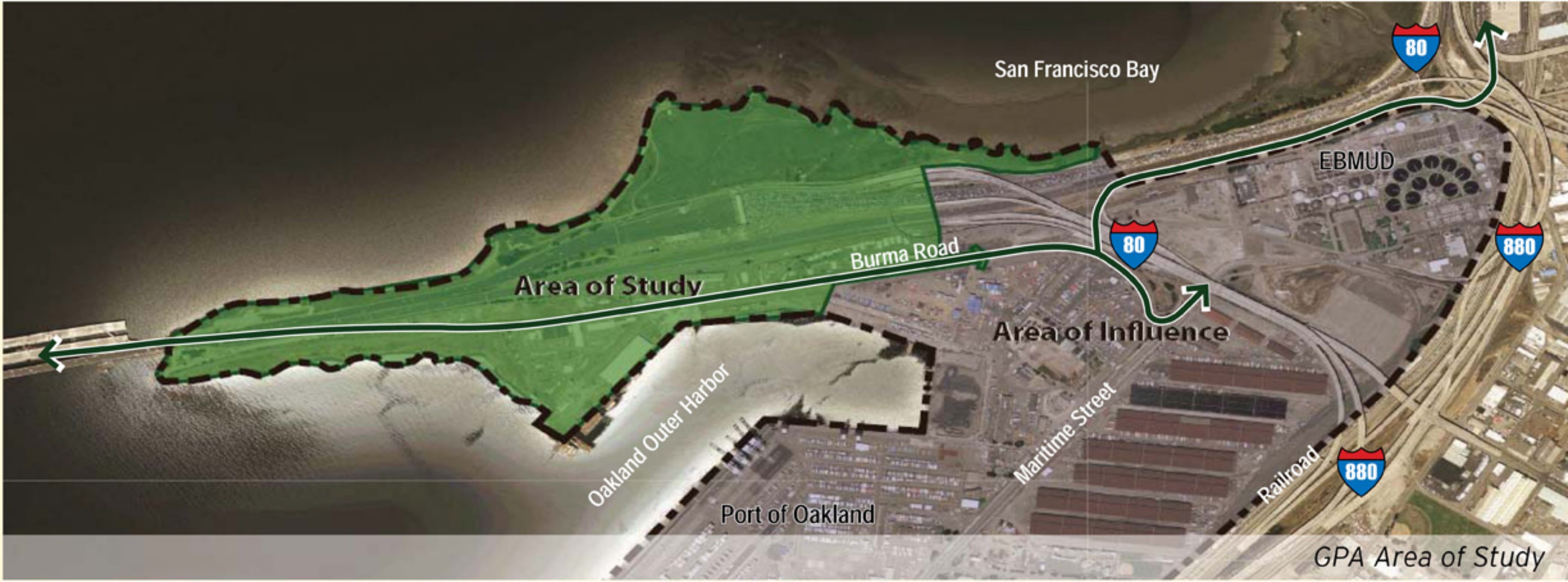
Gateway Park





THE SITE





San Francisco Bay



EBMUD

Burma Road

Area of Study



Area of Influence



Oakland Outer Harbor

Maritime Street

Port of Oakland

Railroad



GPA Area of Study

- three concepts
- maps and pictures
- who we are
- be heard and involved
- workshop materials
- news room
- task at hand
- links
- contact us

"We've been given a great gift in this opportunity...we have to make this place as spectacular as it deserves to be. We would be remiss in not accepting this gift and irresponsible if we do not achieve excellence in our planning of this very special gateway."

– Will Travis, Executive Director
*SF Bay Conservation and Development Commission
 Gateway Park Workshop
 February 25, 2010*



**A waterfront park celebrating the Bay...
 at the foot of the new Bay Bridge East Span.**

Over 10 years ago, the Bay Bridge design team identified a unique opportunity to create a park that would provide a memorable gateway to Oakland at the point where the new bridge touches down in the East Bay. The park would offer an unprecedented way to experience the Bay and the new bridge.

Representatives of nine agencies are working to explore the possibilities of a new park for local residents, commuters, businesses, international travelers, environmentalists, boaters, cyclists, and others. They welcome the community as partners in planning how Gateway Park may benefit the health, economic vitality and quality of life for everyone in the region.

To date, the community has responded with enthusiasm and creativity.

The park concepts are designed to explore how best to nurture a natural setting, serve the area workers and West Oakland, and enhance the Bay Trail experience. Among the possibilities:

- Restore the industrial area to its natural beauty and generate new wetland areas
- Create trails linking all of Oakland to the park and the future Bay Bridge bike and pedestrian experience
- Offer self-guided exploration or a museum to celebrate West Oakland's and the Bay Area's rich heritage in transportation, engineering, military, and maritime
- Bring such excitement as a Ferris wheel, gondola, art, or a destination restaurant.

You are invited to join in exploring the possibilities of Gateway Park.

- [View Workshop 2 plans and video about park concepts](#)





Small Kids Room
 BEACHES LONGUES
 Nature exploring stations
 Beer garden
 Beach area w/ bar
 Pedalo etc
 People watching
 People access walking path

BIKE RACKS ONLY
 THESE THINGS LOOK NICE
 Bike Bell
 COFFEE
 RECREATION ORGANIZED + DEVENUE CENTER
 COFFEE SHOP ON JERBA BUENA FOR CYCLISTS! YAI
 PEAK AREA AT BEACH DOWN
 DANCE FLOOR-SALSA @
 PASSIVE USE ONLY
 BIKING DANCES
 DANCE PAVILLION
 COMMUNITY EVENTS MOVIES!
 FLASH MOB'S (PILLOW FIGHT FE)
 AGRICULTURE Education - small production
 EXERCISE STATIONS LIKE IN CHINA!
 OPEN AIR THEATRE (i.e. SHAWAR) NEAR PARKS AND ST. HOMEWORKING GREEN
 NATURE STATIONS

FOG

FRIENDS OF THE GATEWAY

In a few years, where the new Bay Bridge touches down in Oakland, as many as 200 acres of land will be returned to the community. FOG wants this space to become a new creative commons, a vibrant arts destination for the people of the Bay Area and beyond. Would you like to help?



AMERICAN STEEL STUDIOS

American Steel Studios

A COMMUNITY OF ART,
INNOVATION AND INDUSTRY

ABOUT

SPACE

COMMUNITY

EVENTS

NEWS



Go

ING DIRECT



Google Offers
The best at even better prices.

Sign up now

Advertise on NYTimes.com

THE BAY CITIZEN | LOCAL INTELLIGENCE

American Steel Studios



Adithya Sambamurthy/The Bay Citizen

On Tuesday, Orion Fredericks was hard at work on his metal and fire sculpture at American Steel Studios.

By SAM LAIRD

Log in to see what your friends are sharing on nytimes.com.
Privacy Policy | What's This?

Log In With Facebook

What's Popular Now

Percentage of Americans Living in Poverty Rises to Highest Level Since 1993



Is It Weird Enough Yet?



Ads by Google

what's this?

Events In The Bay Area

Bay Area LUNAFEST Film Festival Sept. 22, 2011. Buy Tickets Now.
www.LUNAFEST.org

Chromebooks have arrived

Less loading. More surfing. Instant resume & 8 second startup.
google.com/chromebook

Pre-Engineered Buildings

Free Quotes - Multiple Suppliers Compare Prices, Options &











